



venue industries

CURATEDCOLLECTION

Interactive Card

MAYER
FABRICS



COSMOPOLITAN
WC968-027 Chalk



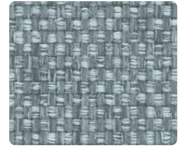
HAVEN
472-007 Cocoon



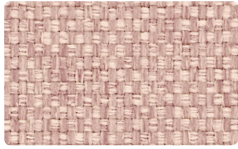
GEM
626-007 Oat



HAVEN
472-027 Dove



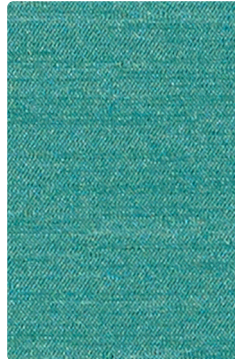
GRAVITY
TL464-004 Spa



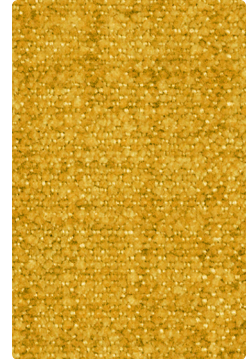
GRAVITY
TL464-001 Blush



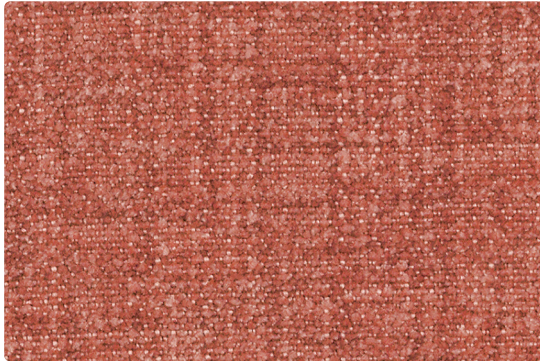
GEM
626-027 Blush



MATKA
MT-023 Peacock



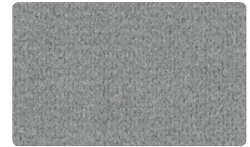
HAVEN
472-002 Butterscotch



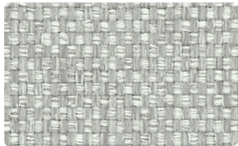
HAVEN
472-001 Coral



FEDORA
621-023 Eucalyptus



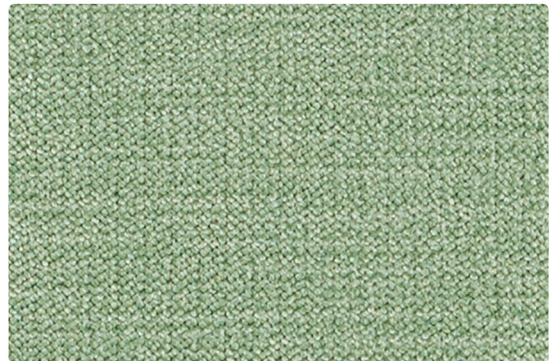
GEM
626-026 Metal



GRAVITY
TL464-013 Lichen



MATKA
MT-024 Seafoam



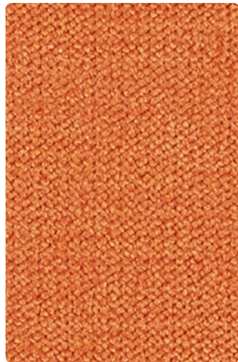
COSMOPOLITAN
WC968-003 Opal



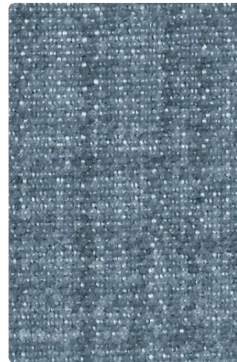
MATKA
MT-053 Aloe



FEDORA
621-013 Citron



COSMOPOLITAN
WC968-009 Tangerine



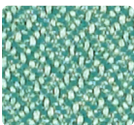
HAVEN
472-014 Iceberg



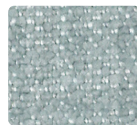
HAVEN
472-009 Apricot



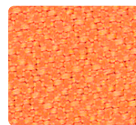
MATKA
MT-014 Cerulean



FORTE
298-033 Fairway



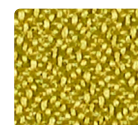
HAVEN
472-004 Powder



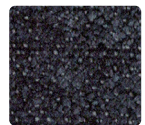
FORTE
298-019 Squash



FEDORA
621-003 Cactus



FORTE
298-013 Avocado



HAVEN
472-036 Raven

Additional colors are available. Please refer to the Mayer Fabrics website.

TECHNICAL INFORMATION

Curated Collection | Interactive Card

Pattern 54 [†]	Content and Backing	Certifications	Weight/ Linear Yd.	Pattern Repeat	Finish	Abrasion Wyzenbeek	Light- Fastness	Flammability	Cleaning Code
COSMOPOLITAN <i>Directional</i>	88% Polyester, 12% Nylon Backing: Crypton [®]	GREENGUARD Gold	19.28 oz.	None	Crypton [®] with Antimicrobial Silver Ion Technology	100,000 [^] Double Rubs	40 hours	Cal. 117-2013 NFPA 260/UFAC Class 1	C, BC
FEDORA <i>Directional</i> <i>Multi-use⁺</i>	100% Polyester Backing: Polyester	GREENGUARD Gold	17.2 oz.	None	Stain Repellent - PFOA Free	100,000 [^] Double Rubs	40 hours	Cal. 117-2013 NFPA 260/UFAC Class 1 ASTM E84 (Unadhered) Class 1 or A	W
FORTE <i>Multi-use⁺</i>	100% Polyester Backing: Acrylic	GREENGUARD Gold	12.1 oz.	None	Stain Repellent	183,000 [^] Double Rubs	40 hours	Cal. 117-2013 NFPA 260/UFAC Class 1 ASTM E84 (Adhered) Class 2 or B	WS
GEM <i>Directional</i>	100% Polyester Backing: Polyester	GREENGUARD Gold	19.68 oz.	None	Liquid and Stain Repel - PFOA & PFOS Free	100,000 [^] Double Rubs	40 hours	Cal. 117-2013 NFPA 260/UFAC Class 1	W
GRAVITY	87% Polyester, 13% Graffiti-Free [®] Tekloom [®] TPE Backing: Polyester	GREENGUARD Gold	16 oz.	Non- Matching	WRITE AWAY [®] - Soil & Stain Resistant Top Coat with Ink Resistant Technology	1,000,000 [^] Double Rubs	40 hours	Cal. 117-2013 NFPA 260/UFAC Class 1 IMO A.652(16)8.2	WS, BC, CFC
HAVEN <i>Directional</i>	92% Polyester, 6% Polyurethane, 2% Silicone Backing: Fluid Barrier (Supreen) Polyurethane	GREENGUARD Gold	22 oz.	Non- Matching	Supreen (Silicone) PFAS Free	100,000 [^] Double Rubs	40 hours	Cal. 117-2013 NFPA 260/UFAC Class 1	WS, BC
MATKA <i>Directional</i>	80% Vinyl - Phthalate Free face, 20% Polyester backing	GREENGUARD	30 oz.	Non- Matching	Soil & Stain Resistant Top Coat with Ink Resistant Technology	250,000 [^] Double Rubs	500 hours	Cal. 117-2013 NFPA 260/UFAC Class 1	WS, BC, CFC

REDUCED ENVIRONMENTAL IMPACT

These products are GREENGUARD Certified or GREENGUARD Gold Certified for low chemical and particle emissions to UL standard UL 2818 and may contribute to LEED certification.

No FR Additives

No Antimicrobial/Antibacterial Additives
Fedora, Forte, Gem, Gravity, Haven, Matka

PFAS Free
Cosmopolitan, Gem, Gravity, Haven, Matka

CARE AND CLEANING INFORMATION

W: Water-Based Cleaner WS: Water/Solvent Cleaner

C: Crypton Cleaning CFC: Coated Fabrics Cleaning – Refer to Mayer website for complete cleaning info.

BC: Bleach Cleanable – 1 part bleach, 9 parts water = 10% bleach, 90% water solution. **Do not clean/disinfect fabric for longer than 10 minutes using the 10% bleach solution. Always rinse promptly with clean water after applying the bleach solution. Failure to do so will void any and all warranties.**

DYE TRANSFER DISCLAIMER

Certain clothing and accessory dyes (such as those used on denim jeans) may migrate to lighter colors. This phenomenon is increased by humidity and temperature and is irreversible. Mayer Fabrics will not assume responsibility for dye transfer caused by external contaminants. Please check compatibility when using this product in combination with painted or varnished surfaces.

ADDITIONAL INFORMATION

[^] Abrasion test results exceeding ACT Performance Guidelines are not an indicator of product lifespan. Multiple factors affect fabric durability and appearance retention.

⁺ A multi-use fabric that can be used for upholstery, panels, wrapped walls, and acoustic.

Warranty: Please refer to the Mayer website for warranty information by pattern.

Custom Colors: All patterns can be custom colored. Minimum yardage applies.

Digital Swatch Card Color Matching: Due to color variations on different monitors and color printers, actual swatch colors may vary slightly. Please request a memo sample from Mayer Fabrics to ensure proper color representation.

Complete and current product information available at mayerfabrics.com.



These fabrics meet or exceed these ACT performance guidelines.
*Certification Marks owned by ACT[®]

©2023
VENCCD MR0923


venue industries

MAYER FABRICS

T. 855.558.3683 venueindustries.com
sales@venueindustries.com
3212 N. 40th St. Ste. 103B Tampa, FL 33605

T 800.428.4415 mayerfabrics.com
500 S. Kitley Ave. Indianapolis, IN 46219